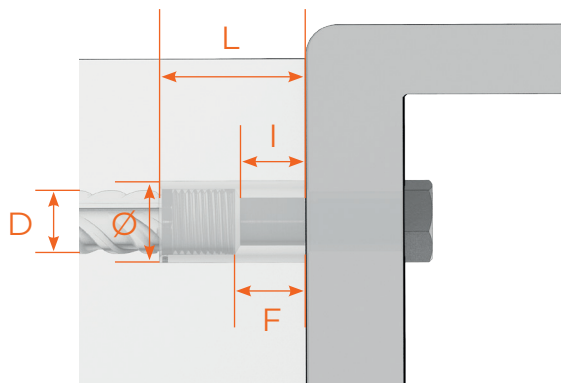
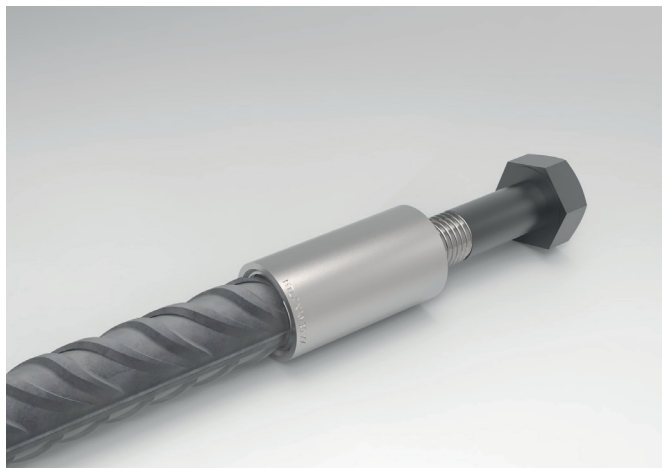




X TYPE COUPLER

D 71 EN Ind. B

11/10/2023



Coupler with metric threads in order to connect steel structures to concrete structures. The X coupler allows to **connect standard metric bolts of class 8.8 or 10.9** with BARTEC by Linxion splice on rebars.

Coupler	Rebar		10.9 class screw	Rebar splices	Couplers		L min screw length	Empty space for screw	
Type *	Nominal diameter (mm)	Threads according to ISO	Threads according to ISO	N _{rd} (kn)	L (mm)	D (mm)	** I min (mm)	*** I max (mm)	F (mm)
X14-12	14	M16x3	M12	60.7	38	20	12	18	22
X18-16	18	M22x2	M16	110.7	52	28	16	26	30
X20-18	20	M24x3	M18	136.7	62	30	18	33	38
X26-20	26	M30x3.5	M20	176.4	69	37	20	33	39
X30-24	30	M36x4	M24	254.2	75	45	24	33	39
X32-30	32	M36w4	M30	349.8	84	50	30	38	45
X34-27	34	M39x4	M27	330.5	83	49	27	36	44
X40-30	40	M45x4.5	M30	403.9	95	56	30	43	50

* The designation, for instance X 14-12 refers to a revbar diameter 14mm and a M12 thread for the bolt.

** The I min dimension refers to the minimum permitted threading lenght in the coupler.

***The I min dimension refers to the maximum permitted threadin lenght in the coupler.

BARTEC by Linxion standard coupler shall not be welded nor tack-welded. only special weldable SD couplers can be welded following BARTEC by Linxion installation procedures.